

Key to proposals

- 1 Existing surface to be replaced with permeable area comprising parking bays, reinforced grass, sports surface and paths.
- 2 Revised ground level surface of floor area (200mm above walls). Existing surface or drainage retained. New steps, terraces and walkways.
- 3 Car and bus drop-off area to full street width for road safety. Existing in a continuous area and limited to 40% surface area and 10% area.
- 4 New 2m x 2m sign.
- 5 Existing surface to be replaced with permeable area comprising parking bays, reinforced grass, sports surface and paths.
- 6 Revised ground level surface of floor area (200mm above walls). Existing surface or drainage retained. New steps, terraces and walkways.
- 7 Car and bus drop-off area to full street width for road safety. Existing in a continuous area and limited to 40% surface area and 10% area.
- 8 New 2m x 2m sign.
- 9 Existing surface to be replaced with permeable area comprising parking bays, reinforced grass, sports surface and paths.
- 10 Revised ground level surface of floor area (200mm above walls). Existing surface or drainage retained. New steps, terraces and walkways.
- 11 Car and bus drop-off area to full street width for road safety. Existing in a continuous area and limited to 40% surface area and 10% area.
- 12 New 2m x 2m sign.
- 13 Existing surface to be replaced with permeable area comprising parking bays, reinforced grass, sports surface and paths.
- 14 Revised ground level surface of floor area (200mm above walls). Existing surface or drainage retained. New steps, terraces and walkways.
- 15 Car and bus drop-off area to full street width for road safety. Existing in a continuous area and limited to 40% surface area and 10% area.
- 16 New 2m x 2m sign.
- 17 Existing surface to be replaced with permeable area comprising parking bays, reinforced grass, sports surface and paths.
- 18 Revised ground level surface of floor area (200mm above walls). Existing surface or drainage retained. New steps, terraces and walkways.
- 19 Car and bus drop-off area to full street width for road safety. Existing in a continuous area and limited to 40% surface area and 10% area.
- 20 New 2m x 2m sign.
- 21 Existing surface to be replaced with permeable area comprising parking bays, reinforced grass, sports surface and paths.
- 22 Revised ground level surface of floor area (200mm above walls). Existing surface or drainage retained. New steps, terraces and walkways.
- 23 Car and bus drop-off area to full street width for road safety. Existing in a continuous area and limited to 40% surface area and 10% area.
- 24 New 2m x 2m sign.

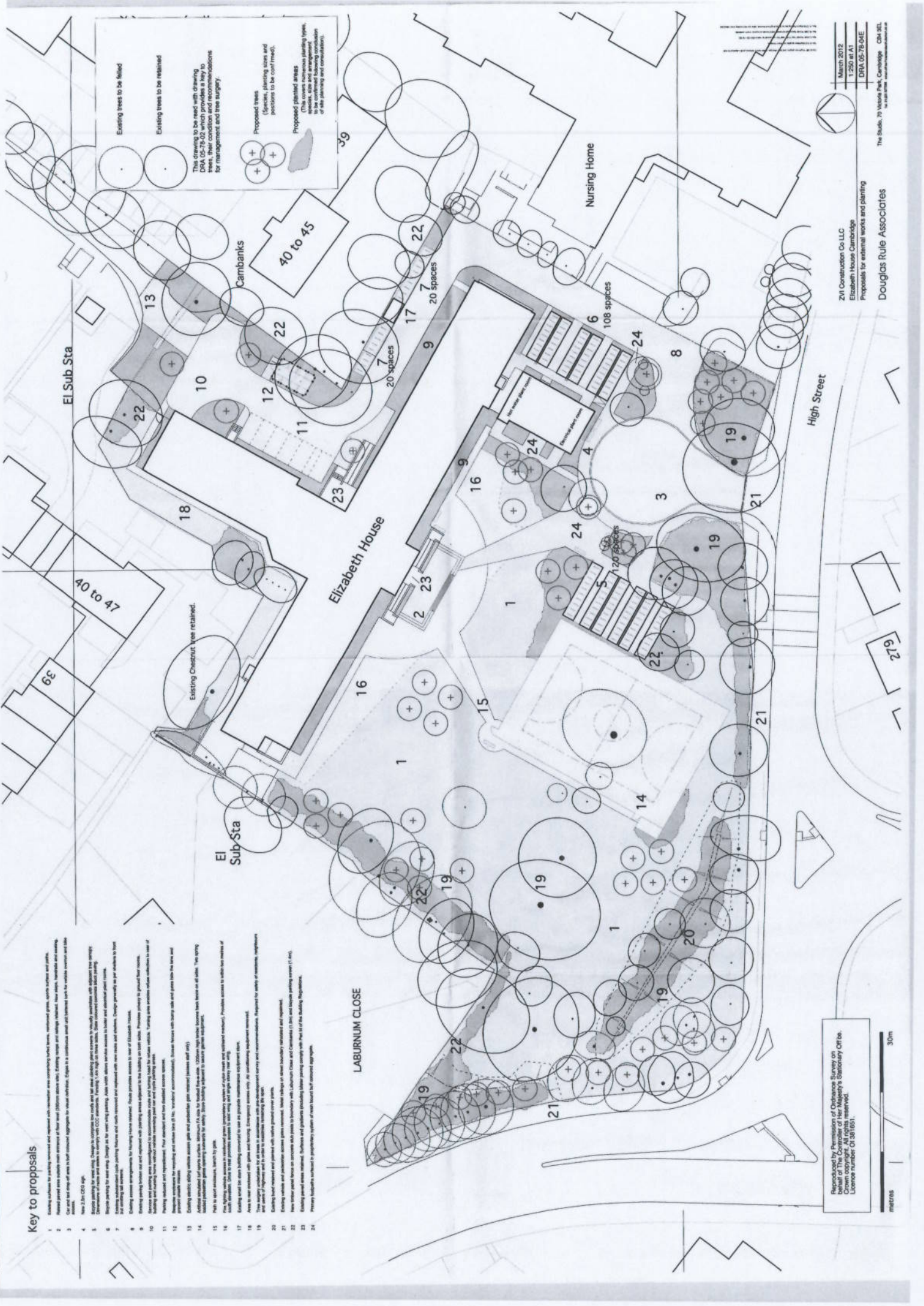
Existing trees to be retained

Existing trees to be retained

The drawing to be read with drawing DRA 05-75-02 which provides a key to trees, their condition and recommendations for management and tree surgery.

Proposed trees (Species, planting size and positions to be confirmed).

Proposed planted areas (This covers numerous planting types, to be confirmed following consultation of site planning and tree surgery).



Reproduced by Permission of Ordnance Survey on behalf of The Controller of Her Majesty's Stationary Office. Crown copyright. All rights reserved. License number 01381051.

metres 30m

March 2012
1:250 at A1
DRA 05-75-04/E
The Studio, 70 Wood Park, Cambridge CB4 3EL
Tel: 01223 326000
www.douglasrule.co.uk

ZVI Construction Co LLC
Elizabeth House Cambridge
Proposals for external works and planting
Douglas Rule Associates